

TYCO



Tyco Toys 1992

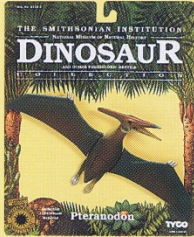
TYCO® BOYS ACTION

THE SMITHSONIAN INSTITUTION
NATIONAL MUSEUM OF NATURAL HISTORY

DINOSAUR
AND PREHISTORIC REPTILE

COLLECTION

Fully authorized by the
Smithsonian Institution and the National Museum of Natural History.



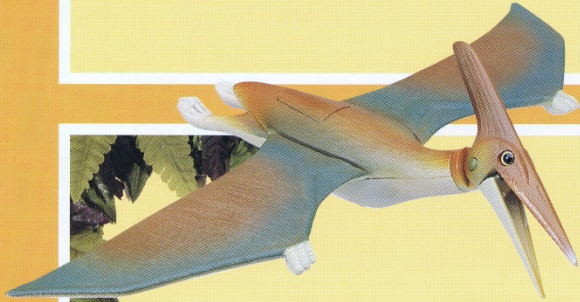
New

Standard Pack: 24 (5 each of Dimetrodon, Deinonychus, Pteranodon, and Styrosaurus, and 4 Monoconlious)
Carton Weight: 8 lbs. • **Cube:** 2.2
Package Size: 9" x 11" x 3"

Smithsonian Dinosaur Assortment I

No. 9119 **NEW**

Smithsonian Assortment I contains 5 realistic dinosaurs — Dimetrodon, Deinonychus, Pteranodon, Monoconlious, and Styrosaurus. Equipped with moveable heads, arms, legs, tails or wings, these prehistoric beasts can assume a variety of lifelike poses. Individually packaged on an eye-catching blister card.



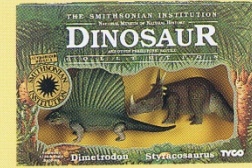
Pteranodon and Monoconlious

Awesome Pteranodon, with wings that flap and toothless jaws that move. One-horned Monoconlious, realistic from horn to hooves with moveable head, legs, and tail.

Smithsonian Dinosaur Assortment II

No. 9128 **New**

Smithsonian Assortment II is packed 12 to a master carton. Assortment consists of 4 each Protoceratops and Deinonychus, Pteranodon and Monoconlious; and Styrosaurus and Dimetrodon.



Standard Pack: 12
Carton Weight: 10 lbs.
Cube: 2.5
Package Size: 8 3/4" x 3" x 13"

New



Styrosaurus and Dimetrodon

Six-spiked Styrosaurus with moveable head, legs and tail. Sail-backed Dimetrodon, a mammal-like reptile with large, fierce teeth and snapping-action jaw.



Protoceratops and Deinonychus

Plant-eating Protoceratops, with moveable head and legs. Swift-moving Deinonychus with kicking-action claws.



Presenting some of the most realistic looking dinosaur replicas you've seen in 65 million years—authorized by the Smithsonian's National Museum of Natural History. From all the dinosaurs who once roamed the Earth, Tyco has chosen the 10 all-time

favorites. They are faithfully reproduced scale models authenticated in 1/24 size. Each prehistoric reptile is articulated so it can be posed in many realistic positions.



New

Stegosaurus

Stegosaurus, a plant-eating dinosaur with moveable legs. Special attention to detail includes remarkably realistic bony plates on the neck and back, and four bony spikes on the tail. And look into his life-like eyes! Can this creature be alive?

Triceratops

Triceratops, authentically reproduced from horns to tail, has been brought back to life with three-horned face and bony collar over its neck. It also has moveable, poseable legs.

Kentrosaurus

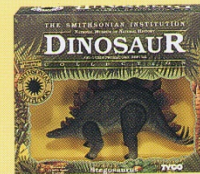
Kentrosaurus walks the Earth again with long spines on its shoulders, lower back, and tail. Moveable legs add realism to this model.

Smithsonian Dinosaur Assortment III

No. 9144 **New**

Smithsonian Assortment is packed 12 to a master carton. Assortment consists of 4 each *Stegosaurus*, *Triceratops* and *Kentrosaurus*.

Standard Pack: 12 • Carton Weight: 15 lbs. Cube: 4.5 • Package Size: 10¾" x 4½" x 13"



New

Tyrannosaurus

No 9149

New

This Tyrant Reptile was the biggest flesh-eating land animal that ever lived! Hind legs and tiny forelimbs are moveable, as is the jaw. This model can be posed to simulate *Tyrannosaurus* as it stalked the earth in search of prey.

**Standard Pack: 2
Carton Weight: 8 lbs. • Cube: 3.0
Package Size: 13" x 10" x 19½"**

